

Engineers Right Angle

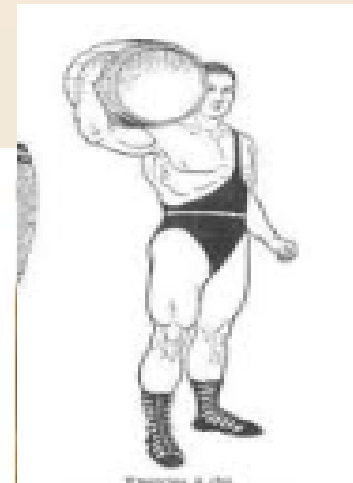
Competent-Collaborative
Engineering services and Consultancy
firm

We shoulder Engineering responsibilities and deliver to clients with ease



TRUTH

Engineers are diverse and come to the profession with a passion to solve real-world problems.



Organization Profile

- *Engineers Right Angle* specializes in the field of 'Mechanical Engineering Services' and 'Multi Discipline Engineering Design', provides engineering solutions for Plants across industrial sectors, manufacturing industries, contractors and construction firms.
- Managed & Lead professionally by Experienced Technologist, with 26 years of experience in Petrochemicals, Chemicals and Oil & Gas, Energy and EPC industry across globe.
- Promoted by Young and Ambitious Entrepreneur with passion with engineering excellence

We shoulder your Engineering responsibilities and deliver to your clients with ease

Our Vision

- To become Globally recognized and India's leading Engineering services Company delivering cost effective, innovative engineering solutions with inherent safety in design and with high integrity

We shoulder your Engineering responsibilities and deliver to your clients with ease

Mechanical Engineering Services

- Conceptual Engineering-Equipment sizing, cost estimation for project initiation
- Fabrication of Equipment
- FEED Deliverables-Data sheets, weight and cost estimate, civil load data, appurtenances
- **Detail design with calculations, GA drawings, internal details and manufacturing detail drawings (PV ELITE, ACAD)**
- Technical and commercial bid evaluation with unbiased review results
- Vendor document management
- Expediting service for Fabrication Equipment
- Operating, Installation and instruction manual, “As built” drawing
- MDR compilation
- Documents for statutory approvals like CCOE, IBR, agency
- Spares list
- Painting and insulation schedule
- Man power services for installation and supervision, pre-commissioning, trouble shooting

We shoulder your Engineering responsibilities and deliver to your clients with ease

Equipment Engineering Services

- Vessels, Reactors ,Tanks, Columns, Silos, Heat exchangers, Air cooled exchangers, Mechanical Design and specifications
- Cost estimation
- Equipment Fabrication and it's Detail drawings (ACAD)
- Pump, Compressor, Blower Design & Specification
- Package Unit Specification
- **Skid layout, 3D model, pipe spool detail drawings, bill of material**
- Procurement Services
 - Vendor Offer Evaluation & Recommendation
 - Vendor Interaction
 - Vendor Documents Review

We shoulder your Engineering responsibilities and deliver to your clients with ease

NOTABLE WORK DONE

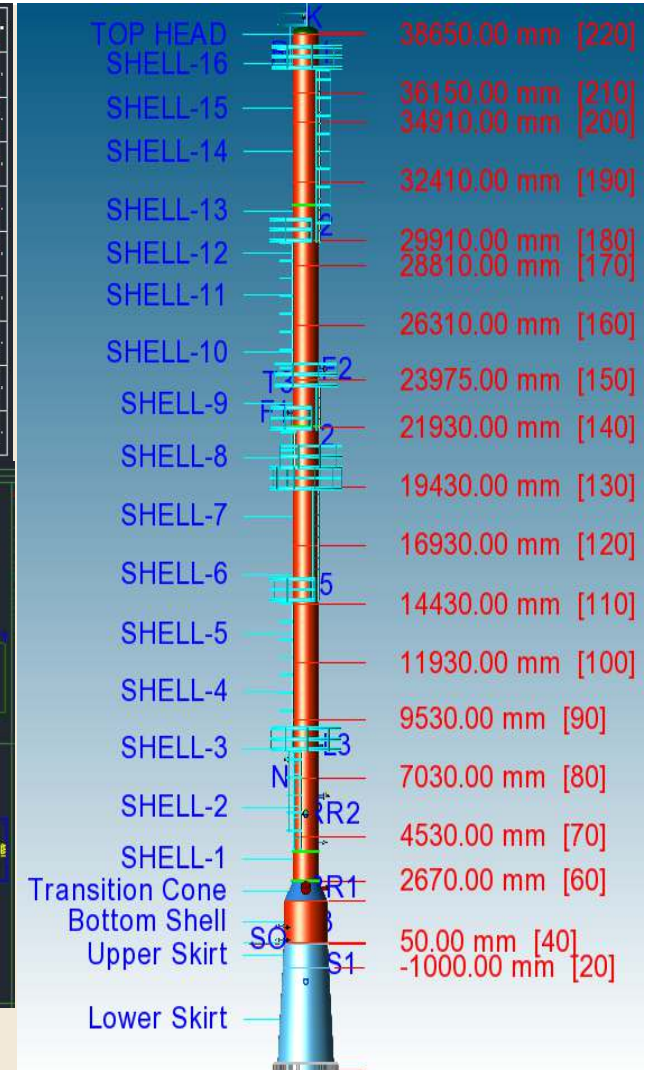
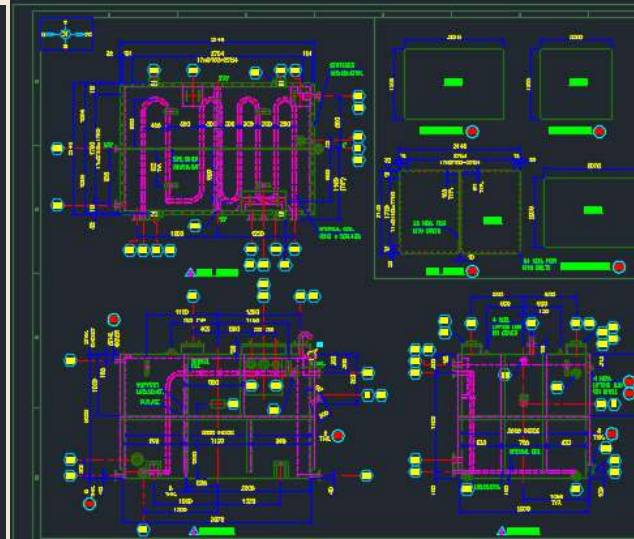
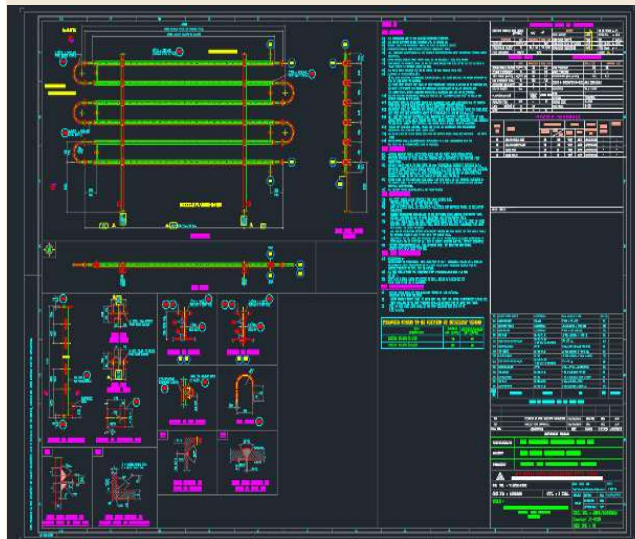
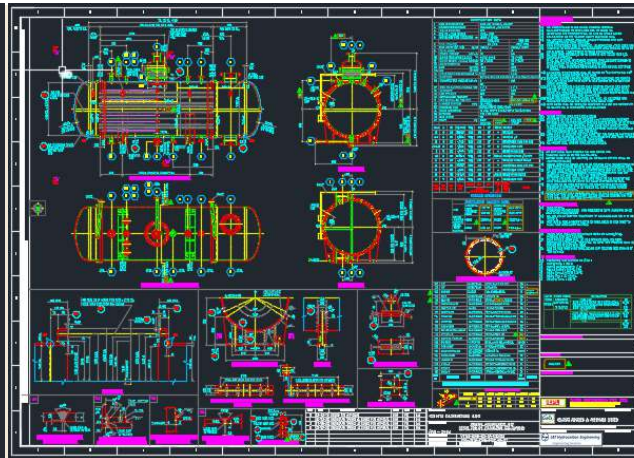
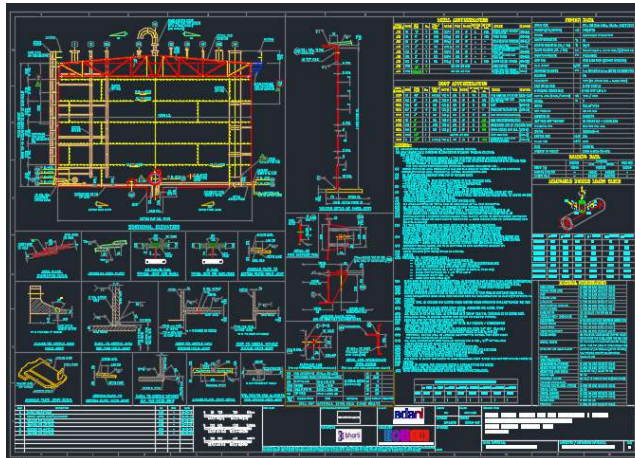
SR. NO.	PROJECT NO.	TYPE OF EQUIPMENT	DIAMETER	HEIGHT /LENGTH	THK.	NO. OF TUBES	PRESSURE	TEMP.	MAX ATTRIBUTE	MOC	CLIENT
1	1908002	TANK	18000	11500	10		0.01	65	DIA, HEIGHT AND THK	CS	ADANI APSEZ LTD.
2	1809001	TANK	1300	1600	6		0.05	300	PRESSURE, TEMP.	CS	NOCIL LIMITED
3	1904006	VESSEL	5000	3600	10		0.51	240	DIA	CS	TATA STEEL LTD.
4	1901002	VESSEL	1400	10200	20		31.6	345	HEIGHT	CS	HPCL MITTAL ENERGY LTD.
5	1809002	VESSEL	2200	3300	50		48	200	THK, PRESSURE	CS	NOCIL LIMITED
6	1901002	VESSEL	2000	3970	14		9	405	TEMP	CS	HPCL MITTAL ENERGY LTD.
7	1811005	HEAT EXCHANGER	2386	10212	24	2145	18.2/17.2	100	DIA, HEIGHT, NO. OF TUBES	CS	HPCL MITTAL ENERGY LTD.
8	1805002	HEAT EXCHANGER	1100	8203	44	582	21.5	255	THK	CS	HPCL
9	1805026	HEAT EXCHANGER	508	4084	8	178	4.3/6	285/70	TEMP	SS 304	FORMOSA PLASTICS CORPORATION,U.S.A.
10	1812002	HEAT EXCHANGER	650	7696	12	455	42/7	180/80	PRESSURE	CS	IFFCO
11	2002002	COLUMNS	2500	31950	26		2	100	LENGTH	CS	GACL
12	2002002	COLUMNS	2500	31950	26		2	100	LENGTH	CS	GACL

Process Engineering Services

- Process Simulation
- Thermal Design of Heat Exchanger, Air Fin Coolers, Economizer.
- Distillation Column Sizing
- Vessel Sizing (Two Phase, Three Phase Separator)
- Scrubber Sizing
- Hydraulic Calculations and Line Sizing
- Safety Valve Sizing
- Flare System Analysis
- Vendor Document Review and Purchase Assistance
- Cost Estimation and Project Feasibility Analysis.

We shoulder your Engineering responsibilities and deliver to your clients with ease

Some sample Snap done by Static Department



Process design Engineering documents delivered

- Basic Flow Diagram – Concept Design Stage
- Design Basis and Design Concept Note.
- Process Flow Diagram and Heat and Mass Balance
- Process Simulation Report (If Applicable)
- Process Description
- P&Id Diagram
- Cause & Effect Diagrams,
- Control Philosophies,
- Shutdown Philosophies
- Process Equipment Datasheet
- Process Instrument Datasheet
- Line List
- Technical Bid Evaluation for Vendor Package

We shoulder your Engineering responsibilities and deliver to your clients with ease

Piping Engineering Services

□ Layout

- ❖ Conceptualizing and development of Plot plan.
- ❖ Development of Equipment layout.
- Vendor Document review for 3d Modelling.
- Preparation of Piping Material Specification
- Pipe wall thickness Calculation as per ASME B31.3

□ 3D Model Development

- ❖ Inputs like Equipment GA, floor elevation, P&ID, Instrument Hook-up used.

□ Deliverable

- ❖ 1st cut BOM from P&ID for Cost Estimation.
- ❖ 3D model review at different stages of project completion.
- ❖ Preparation of Isometric Drawing and Piping GAD.
- ❖ Final Piping BOQ preparation as per P&ID line list.

We shoulder your Engineering responsibilities and deliver to your clients with ease

Piping Engineering Services

□ Stress Analysis

- ❖ Piping having High temperature and Pressure are taken under as critical line.
- ❖ Analysis on Critical line are done on CEASAR II software.
- ❖ Support design.

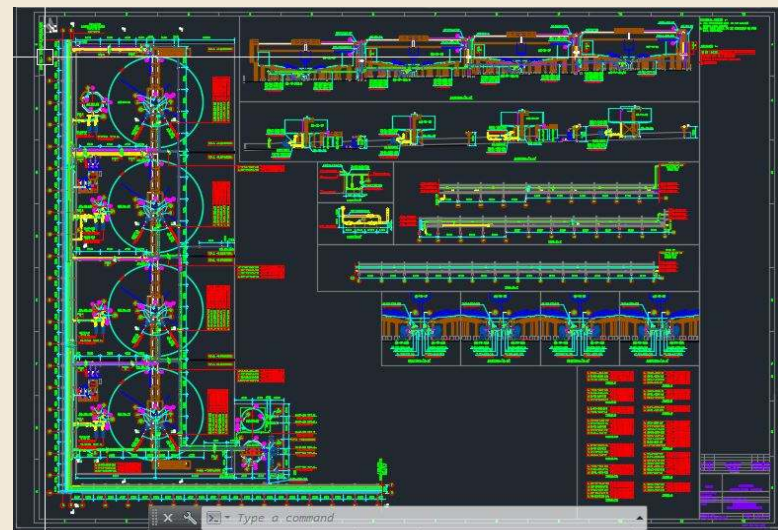
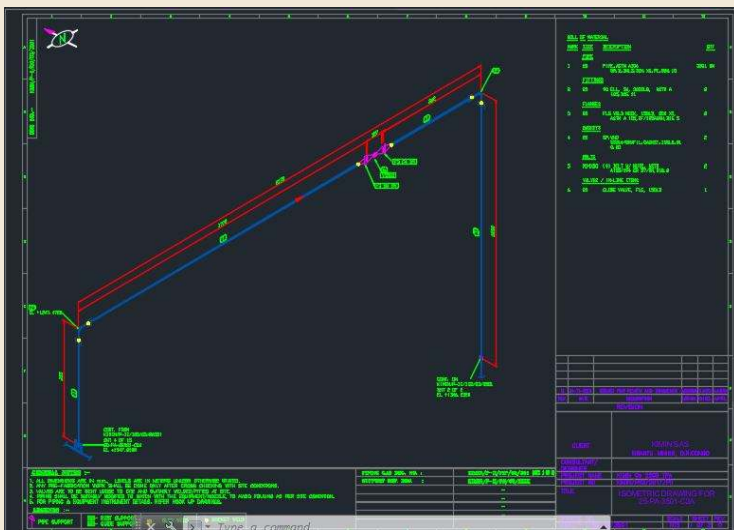
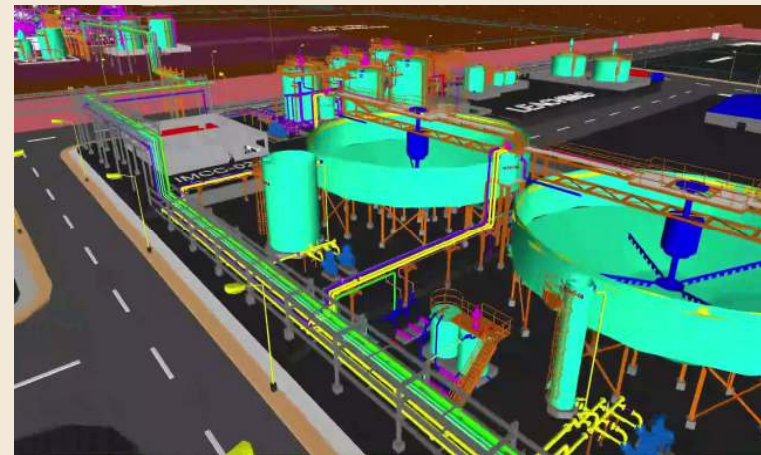
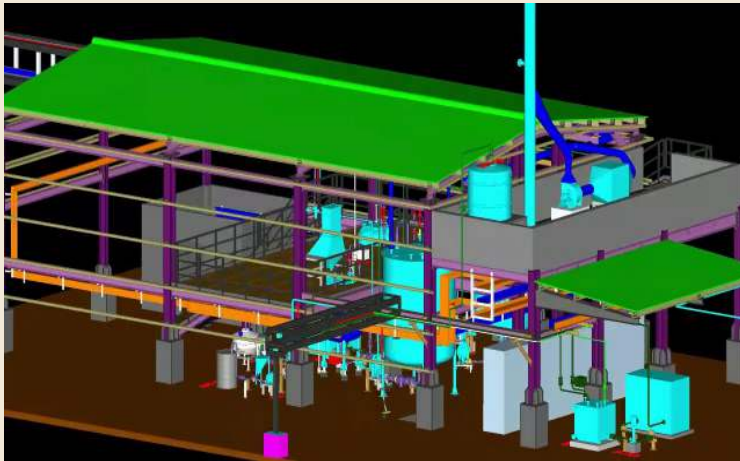
□ As BUILTs

- ❖ As-Built preparation at site for Existing or new pipeline arrangements.
- ❖ Isometric with BOQ .
- ❖ GAD of Piping.

We shoulder your Engineering responsibilities and deliver to your clients with ease

Piping Engineering Services

Project Snap

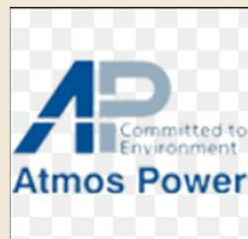


Engineers Right Angle

Our Clients



Group of Companies



We shoulder your Engineering responsibilities and deliver to your clients with ease

Engineers Right Angle

Order From

ANHALTEN FAB ENGINEERS PVT LTD

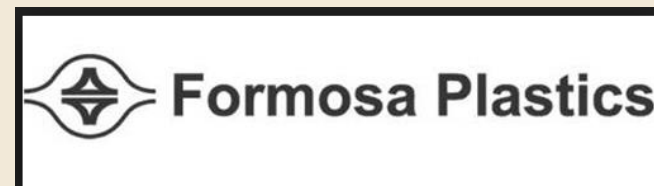


Engineering Contractors



L&T-CHIYODA LIMITED

End Clients



We shoulder your Engineering responsibilities and deliver to your clients with ease

Engineers Right Angle

Capabilities :

1 Lead Engineer Static

2 Design Engineers

1 Piping Engineer

1 Lead Designer

4 Draftsmen

Office Space:

1500+ Sq Feet

We shoulder your Engineering responsibilities and deliver to your clients with ease

Engineers Right Angle

Location & Contact Details : **Engineers Right Angle.**

Address: **14-B, ST Society, OPP Gotri Medical College, Gotri Road
Vadodara-390021**

- E-mail: info@er-angle.com , company@er-angle.com
- Web : www.er-angle.com
- Skype: sunny_gupta9898
- Webex : Will be announced later
- Contact India : +91 9033215834

We shoulder your Engineering responsibilities and deliver to your clients with ease